



INSTALLATION GUIDE (v. 2.1)

< Read carefully before proceeding with the lecture of this manual >

WARNING:



Use only modems supported by this monitoring unit. Dixell S.r.l. can accept no responsibility for possible damage due the usage of not supported modems.

WARNING:



Dixell S.r.l. reserves itself the right to alter this manual without notice. The last version available can be downloaded from our internet website.

WARNING:



This instructions manual describes common functionalities for XWEB300D/XWEB500D/XWEB500 unless otherwise specified.

Hereby instructions refer to firmware version 2.1 or previous.

WARNING:



This is a class A product. In a domestic environment this product may cause radio interference in which case the user may be required to take adequate measures.

WARNING:



Dixell S.r.l. reserves the right to change the composition of its products, even without notice, ensuring the same and unchanged functionality

Contents

1.	CHECK LIST.....	5
2.	RS485 CONNECTION	6
	The TTL output.....	8
	Serial address of the instruments.....	8
3.	MODEM CONNECTION (“or point to point connection”).....	9
4.	INTRANET/ETHERNET CONNECTION	19
5.	INTERNET CONNECTION.....	20
6.	TROUBLESHOOTING GUIDE.....	22
7.	UNIT SETUP REMINDER.....	23

1. CHECK LIST



Before opening package please check it to be intact and it does not show crashes or alteration marks.

In the packaging you shall find:

- XWEB [1].
- CD Rom with manual and accessory softwares [2].
- Power cord [3]
- Installation Quick Guide [4].

Before proceeding setting up a modem connection please check the modem is approved by Dixell. Dixell cannot be held responsible for damages or misuse with other devices.

Connect RS485 line to XWEB with provided plug.

Connect your PC to XWEB with provided RJ45 cross cable.

Proceed executing configuration procedures.

2. RS485 CONNECTION

To be connected to the serial line all the Dixell Modbus instruments must be provided with direct RS485 terminals or the “TTL”-RS485 interface (XJRS485 or XJ485). Check the instrument manuals for more information. The RS485 line is mainly based on two polarised terminals. Please pay respect to the right sequence for all the devices connected to the serial line.

Follow these important instructions:

The RS485 serial line must reach all the instruments where they are installed.

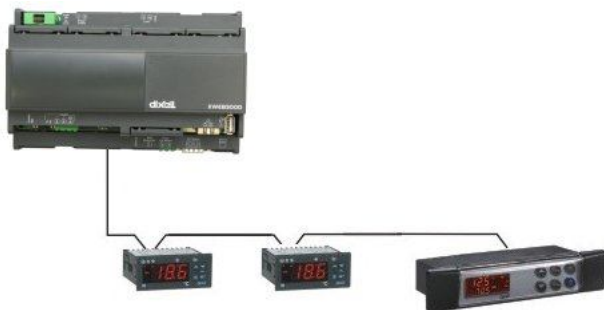
Make sure of the wire polarities when screwing them into the instrument terminals.

The cable must have 2 or 3 wires with shield, minimum section 0,5mm² (eg. the BELDEN 8772).

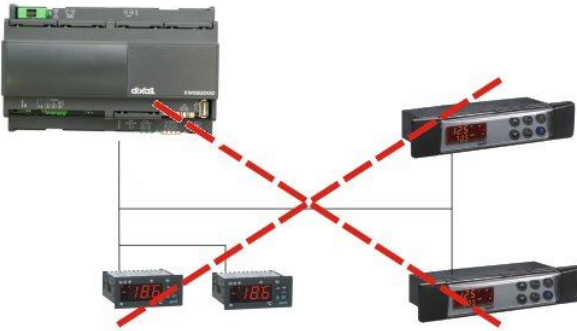
From the XWEB 500 position the cable reaches all the instrument positions.

Do not execute loops or derivations:

Right connection



Wrong connection



Always keep the serial cable away from power cables.

Always keep the serial cable away from Electro-magnetic or frequency sources.

Do not connect shield to ground.

Do not connect the “**Gnd (ground)**” terminal.

Remember to draw a map of the line. This will help you to find errors if something is wrong.

The instrument with RS485 have “+” and “-” terminals, respect the polarity.

To keep the line balanced it is necessary a 100 Ohm resistor at the end of the line (you can use the RS 485+ and RS 485- terminals of the last instrument connected).

The TTL output

The instrument with RS485 on board does not need any kind of external interface module. For instruments with an external interface: keep the TTL cable away from power cables or frequency sources.

The XJ485 external interface must be connected with a TTL cable to the instrument with TTL compatibility.

Serial address of the instruments

Each instrument must be defined by its unique address.

Check the address into the Adr parameter value of each instruments. Take reference to the instruction manual of the instrument itself to find the right procedure to enter the programming and set the value.

The easiest way to work with the category functions is to set the addresses progressively for similar groups of instruments which have the same application.

3. MODEM CONNECTION (“or point to point connection”)

It represents the most common method where the LAN (intranet / Ethernet / internet) is not available.

It is strongly advised to use a dedicated telephone line.

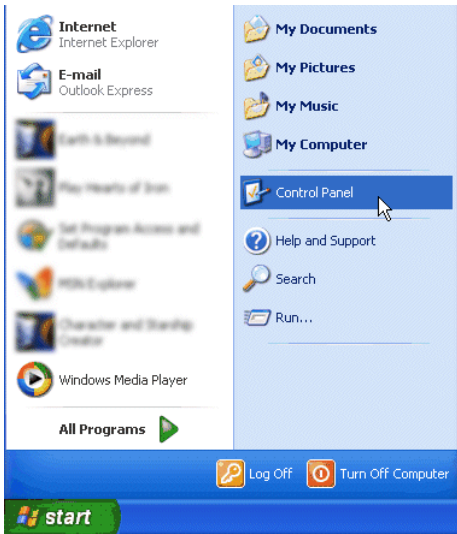
IMPORTANT: Use exclusively modem devices approved by Dixell.

Remember that many modems are not compatible with Linux.

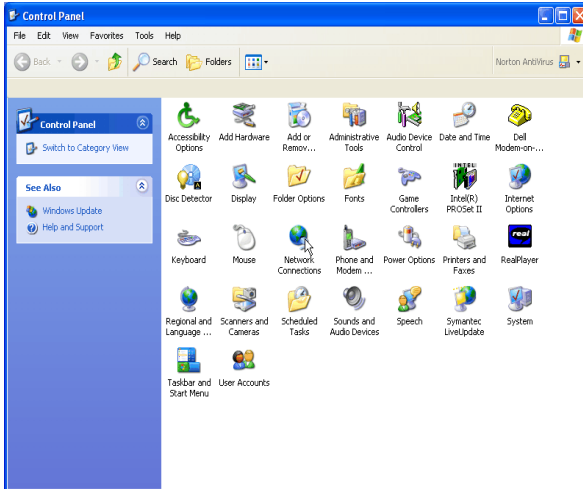
The list of compatible models can be found under the menu: Configuration – System - Modem.

In Windows XP, you will use the "New Connection Wizard".

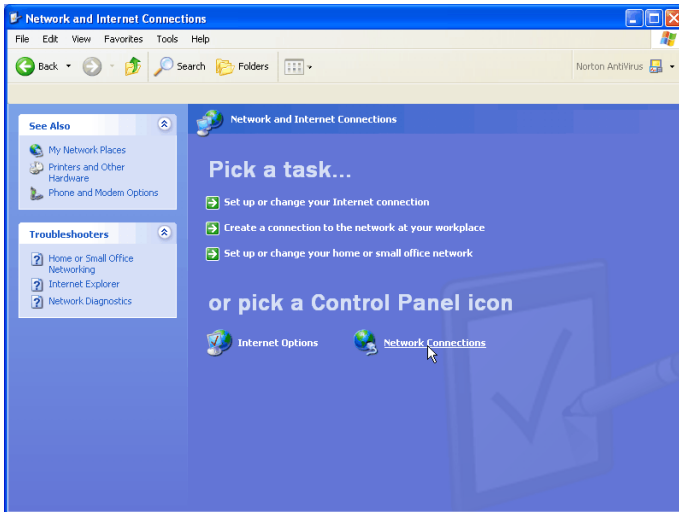
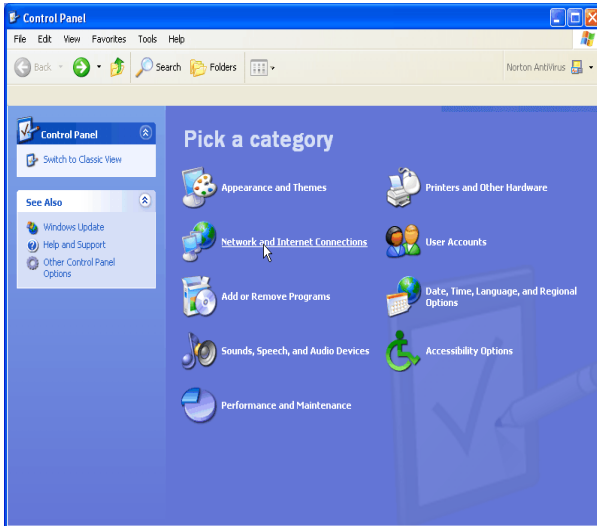
1. From the Start menu, select Control Panel.



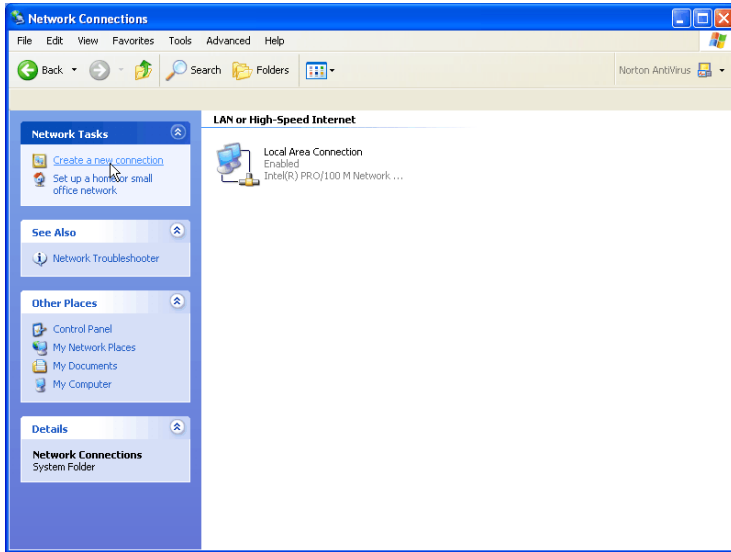
2. If Control Panel is set for "Classic View", double-click on the Network Connections icon.



3. If Control Panel is set for "Category View", select the "Network and Internet Connections" category, then double-click on the Network Connections icon.



4. Under Network Tasks, select "Create a new connection".

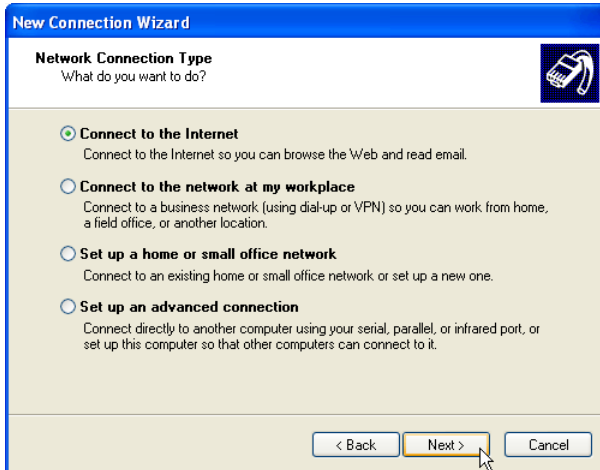


5. Click "Next".

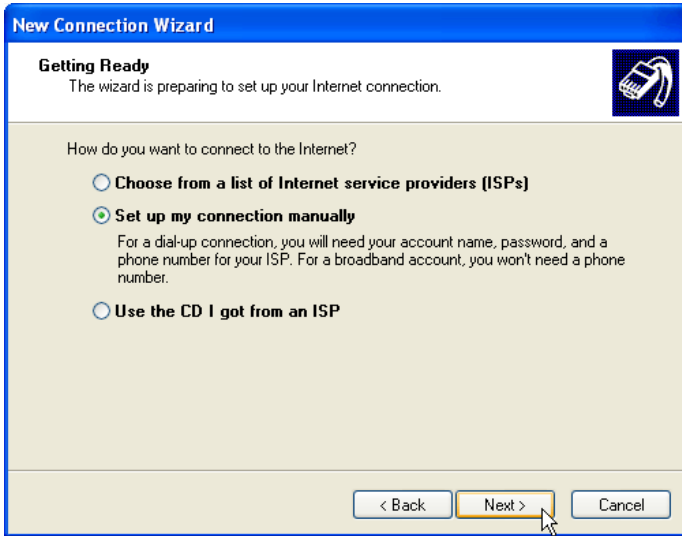


6. Click "Next" at the bottom of this page to continue with the setup instructions.

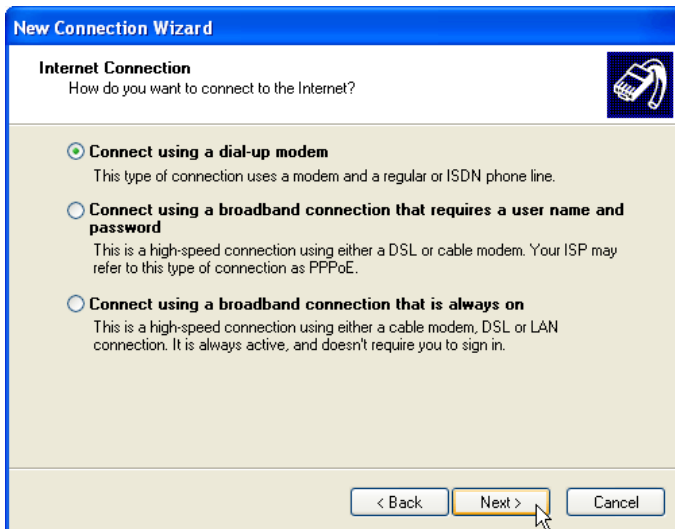
7. Select "Connect to the Internet" and click "Next".



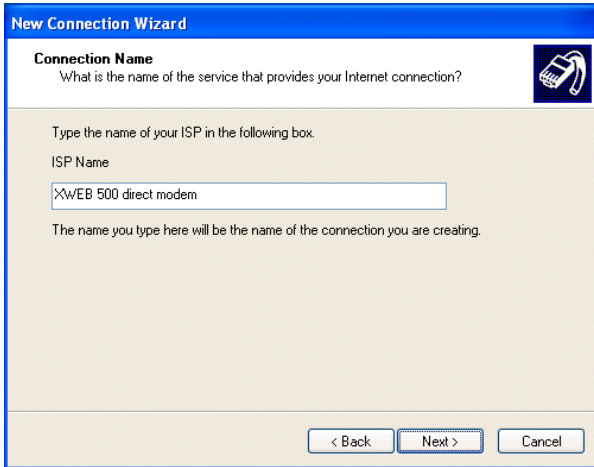
8. Select "Set up my connection manually" and click "Next".



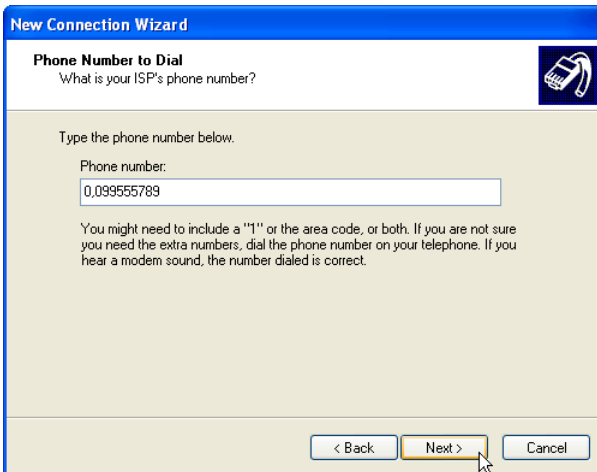
9. Select "Connect using a dialup modem" and click "Next".



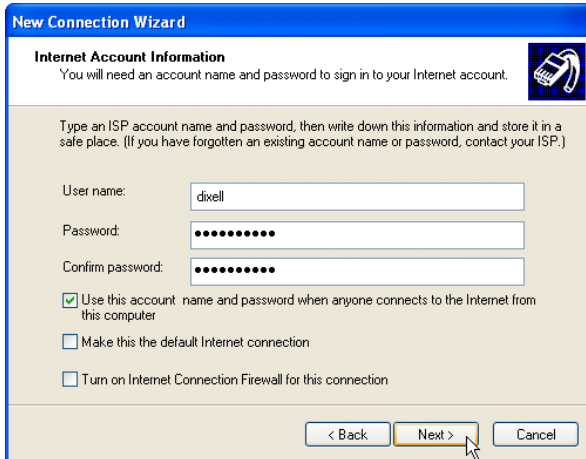
10. Type "XWEB 500 DIRECT MODEM" in the ISP Name box and click "Next".



11. Type the access number in the Phone Number box. E.G: If telephone number is 555789 and area code is 099, put this Telephone number: 099555789. If there is a switching machine and you have to dial a digit to get the line (0 or 9 for example, it depends on the switching machine), put this telephone number: 0,099555789 or 9,099555789. Click "Next".



12. Type dialup account name dixell in the User Name box. Type dialup password dixell in the Password and Confirm Password boxes. We recommend that you check the first 2 checkboxes, but not the 3rd box which turns on the Internet Connection Firewall. Click "Next".



The screenshot shows a Windows dialog box titled "New Connection Wizard" with a blue header. Below the header, the title "Internet Account Information" is displayed in bold, followed by the instruction: "You will need an account name and password to sign in to your Internet account." To the right of this text is a small icon of a computer mouse. Below the instruction, a paragraph of text reads: "Type an ISP account name and password, then write down this information and store it in a safe place. (If you have forgotten an existing account name or password, contact your ISP.)" There are three input fields: "User name:" containing the text "dixell", "Password:" with ten black dots, and "Confirm password:" also with ten black dots. Below the input fields are three checkboxes. The first checkbox is checked and has the label "Use this account name and password when anyone connects to the Internet from this computer". The second checkbox is unchecked and has the label "Make this the default Internet connection". The third checkbox is unchecked and has the label "Turn on Internet Connection Firewall for this connection". At the bottom of the dialog box are three buttons: "< Back", "Next >", and "Cancel". A mouse cursor is pointing at the "Next >" button.

13. Place a tick in the box to create a shortcut on your desktop, and click "Finish".



14. You are now ready to connect to your XWEB 500. If you want to dial your XWEB 500 DIRECT MODEM connection automatically when you start Internet Explorer, do the following. Start Internet Explorer, and select "Internet Options" from the "Tools" menu. Select the "Connections" tab. Make sure that XWEB 500 DIRECT MODEM is your default connection (if not, highlight it and click "Make Default"). Make sure that the "Always dial my default connection" option is selected.

4. INTRANET/ETHERNET CONNECTION

The Intranet or Ethernet connection should be initially managed by the net administrator which will assign one free IP address to reach the Server. This number is an example of what you should expect:

<http://192.168.000.111>.

After receiving the address from your network Administrator the XWEB 500 must be set with this number.

The Intranet method allows the connection to interact with XWEB 500 from all the PC Clients. Insert the net address assigned by the administrator into the Browser address bar. Bookmark the address with personalised name for the future connections.

5. INTERNET CONNECTION

It is necessary to have a STATIC IP address for the XWEB 500 which is normally assigned by the Provider of your internet services (ISP).

The Internet connection allows XWEB to be reached from all PC-clients. Insert the net address assigned by the administrator into the Browser address bar. Bookmark the address with personalised name for the future connections.

Ask your provider for more details about the rent of a the static IP.

This the internet system requirements for the best result:

Wide band connection

At least 1 static IP address for the XWEB.

The internet connection is established through a device called Router that receives and sends the data as interface between an Intranet and Internet. The Provider also assigns the address of the router that is called IP WAN.

Remember that the default value of the IP of the XWEB is: 192.168.0.150.

Depending on the contract the Provider can also supply the router, otherwise the user can buy it separately.

ALWAYS: ask qualified personnel for the router installation by using this information.

Used ports that are mapped to the LAN side:

80 (used for the HTTP access)

22 (used for SSH connection)

While the ports on the WAN side are:

Telnet (to configure the router from a remote, also via Internet).

HTTP (To access the XWEB 500).

If working with the router GATEWAY and DNS check your Internet contract details. Depending on your network topology you may need a reverse NAT on port 80. It is not enough to link port 80 on the router side to port 80 on intranet side. Some firewall or Router need also the reverse NAT.

6. TROUBLESHOOTING GUIDE

Problem	Solution
The log-in page doesn't load	Check your browser setup.
My password doesn't allow me to log-in.	Beware to the caps-lock button an capitol letters. Is it your password correct?
My browser can't reach XWEB 500 log-in page	<p>Check cable typology</p> <p>From windows go to Start->Run...</p> <p>ping 192.168.0.150 -t</p> <p>A continuous set of information should be appear.</p>
Someone in the intranet/LAN receive a warning message about an IP conflict.	XWEB uses the same address of a resource already used in your intranet/LAN. Change XWEB IP address.

7. UNIT SETUP REMINDER

Please take some moments to make an handcopy of this page, then compile it and store it near XWEB unit.

HostName _____

IP Address _____

Gateway _____

DNS 1 _____

DNS 2 _____

SMTP _____

E-mail Address _____

Modem _____

Telephone number _____

Notes

  <p>Dixell S.r.l. - 32010 Pieve d'Alpago (BL) ITALY - Z.I. Via dell'Industria, 27 Tel. +39.0437.9833 r.a. - Fax +39.0437.989313 - www.dixell.com - dixell@emerson.com</p>
--